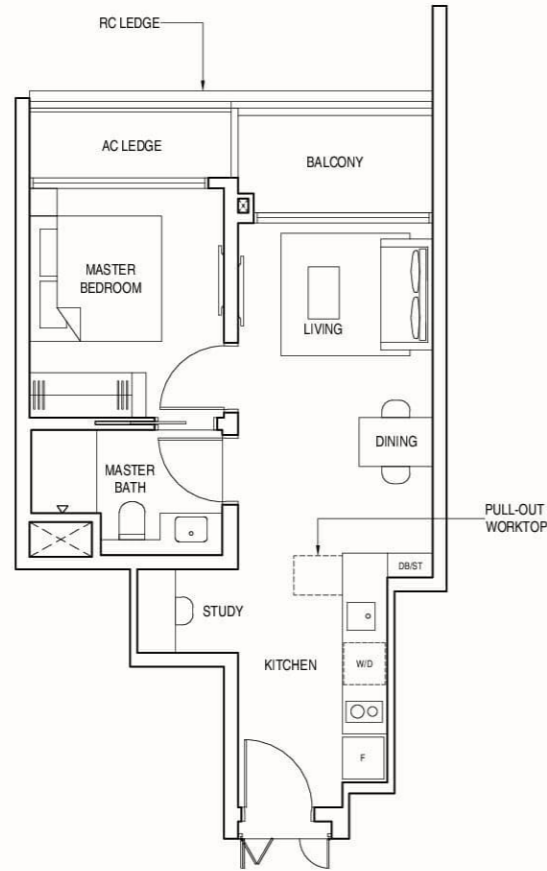


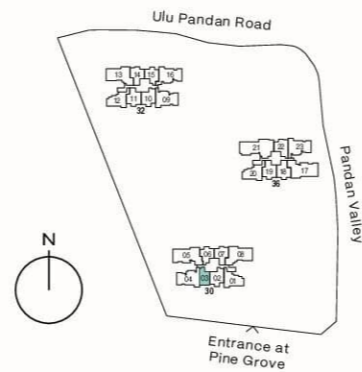
# 1-BEDROOM + STUDY

## TYPE 1BS

50 sqm (538 sqft)  
#03-03 to #24-03



Areas include AC ledge and balcony, where applicable. All RC ledges are excluded from strata area and non-load bearing. The plans are subjected to change as may be required by relevant authorities. All areas and measurements stated herein as approximate and subject to final survey.



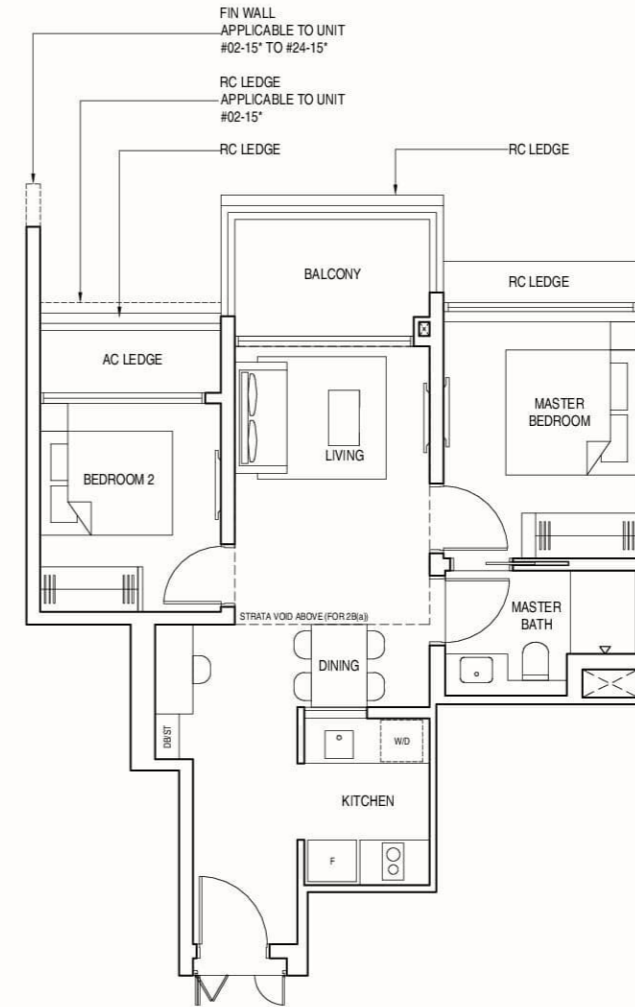
# 2-BEDROOM

## TYPE 2B & 2B(a)

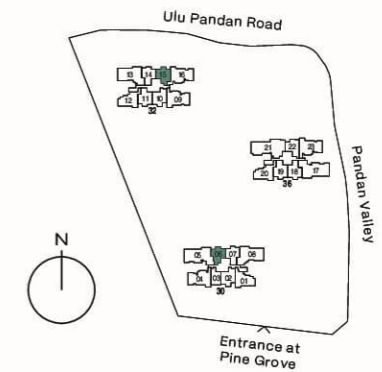
TYPE 2B  
65 sqm (700 sqft)  
#03-06 to #23-06  
#02-15\* to #23-15\*

TYPE 2B(a)  
79 sqm (850 sqft)  
Inclusive of strata void of 14 sqm (151 sqft) above living and dining

#24-06  
#24-15\*  
\*Mirrored unit



Areas include AC ledge and balcony, where applicable. All RC ledges are excluded from strata area and non-load bearing. The plans are subjected to change as may be required by relevant authorities. All areas and measurements stated herein as approximate and subject to final survey.

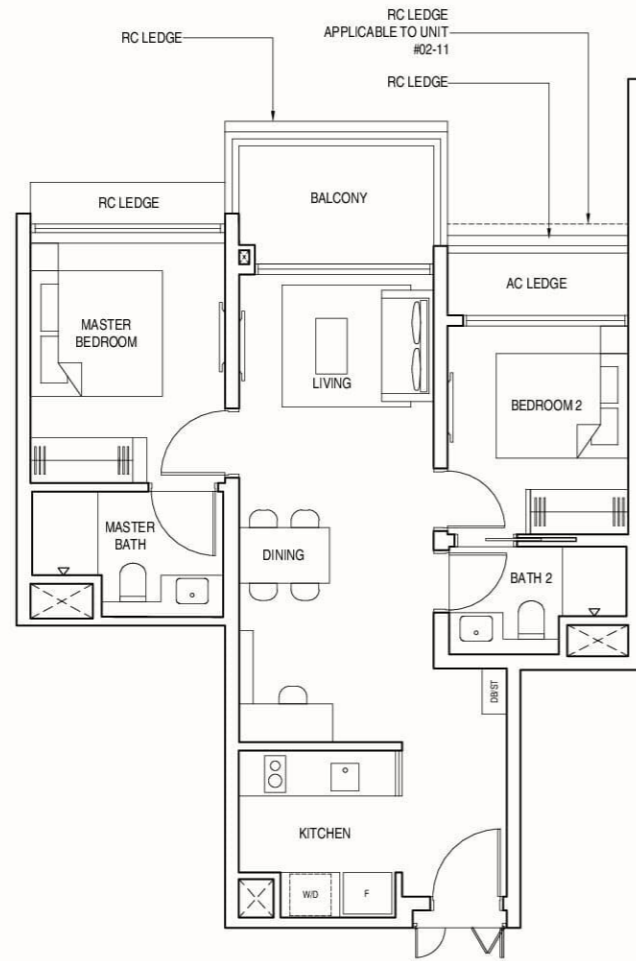


# 2-BEDROOM PREMIUM

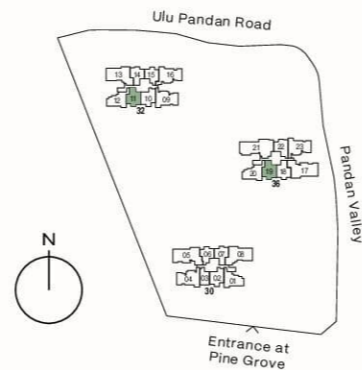
## TYPE 2BP1

71 sqm (764 sqft)

#02-11 to #24-11  
#02-19 to #24-19



Areas include AC ledge and balcony, where applicable. All RC ledges are excluded from strata area and non-load bearing. The plans are subjected to change as may be required by relevant authorities. All areas and measurements stated herein as approximate and subject to final survey.



# 2-BEDROOM PREMIUM

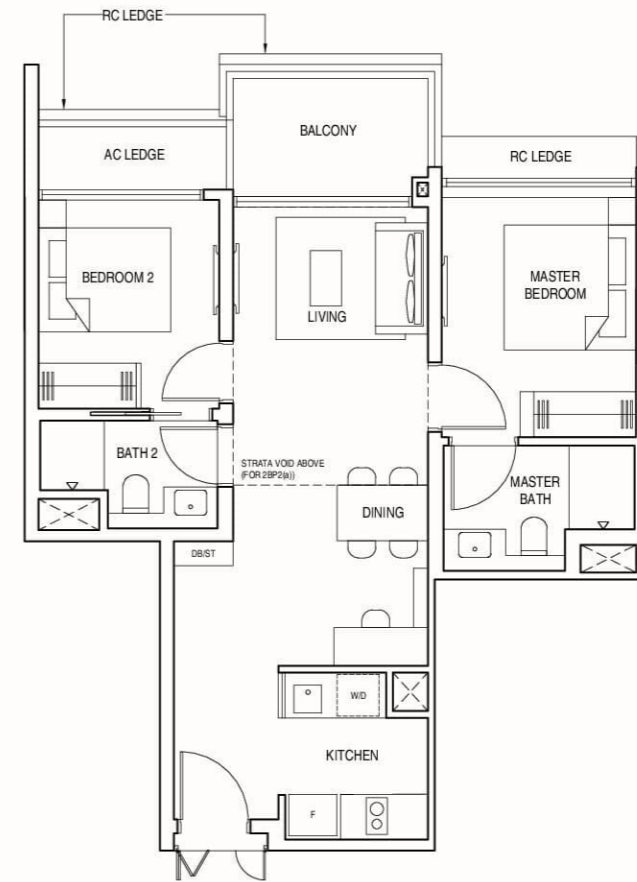
## TYPE 2BP2 & 2BP2(a)

TYPE 2BP2  
71 sqm (764 sqft)

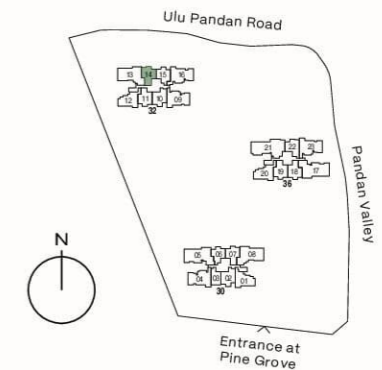
#02-14 to #23-14

TYPE 2BP2(a)  
85 sqm (915 sqft)  
Inclusive of strata void of  
14 sqm (151 sqft) above  
living and dining

#24-14



Areas include AC ledge and balcony, where applicable. All RC ledges are excluded from strata area and non-load bearing. The plans are subjected to change as may be required by relevant authorities. All areas and measurements stated herein as approximate and subject to final survey.



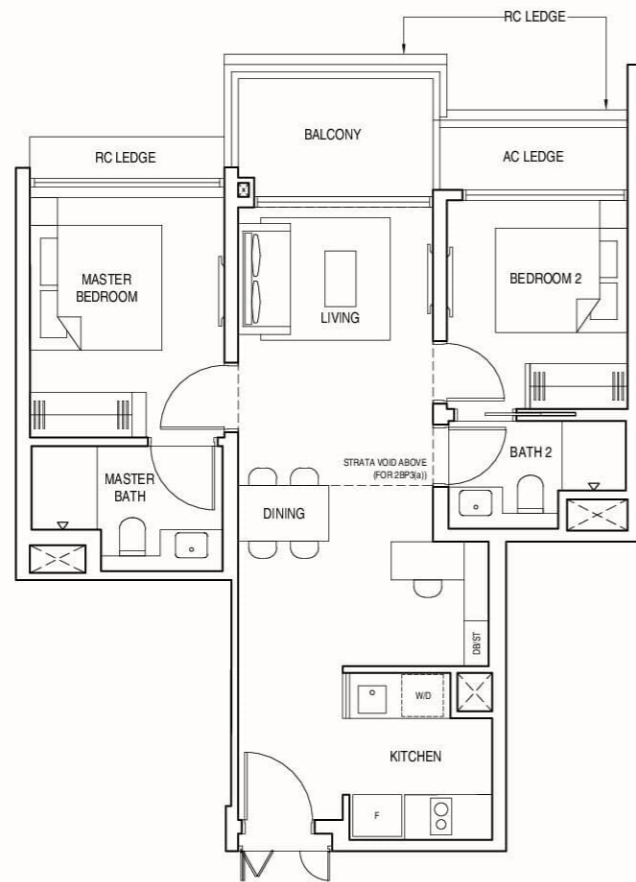
# 2-BEDROOM PREMIUM

TYPE 2BP3 & 2BP3(a)

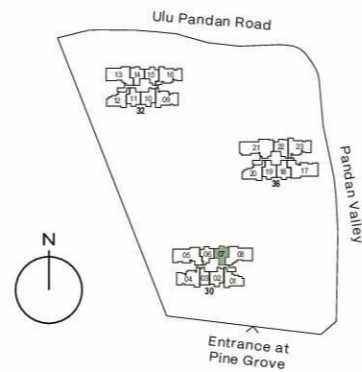
TYPE 2BP3  
71 sqm (764 sqft)  
#03-07 to #23-07

TYPE 2BP3(a)  
85 sqm (915 sqft)  
Inclusive of strata void of  
14 sqm (151 sqft) above  
living and dining

#24-07



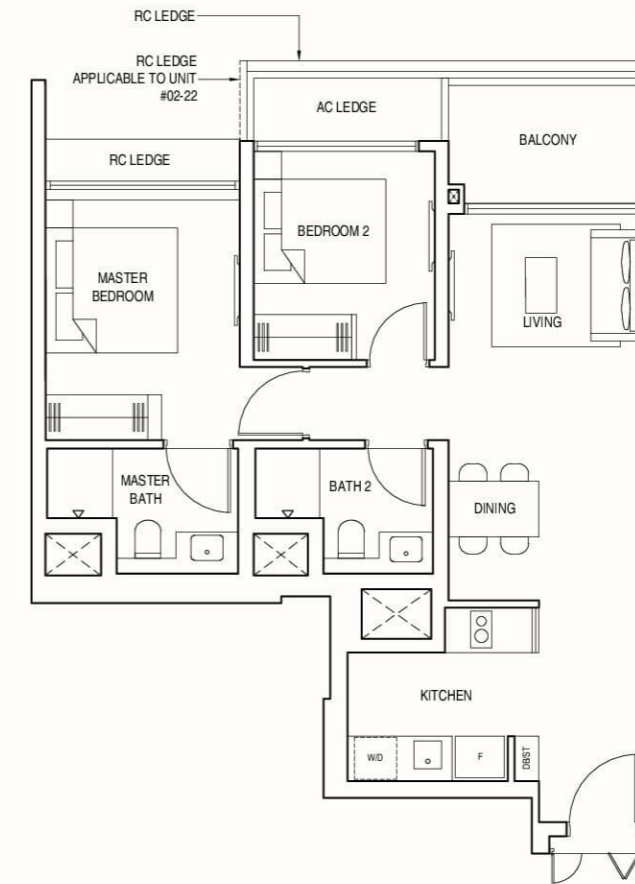
Areas include AC ledge and balcony, where applicable. All RC ledges are excluded from strata area and non-load bearing. The plans are subjected to change as may be required by relevant authorities. All areas and measurements stated herein as approximate and subject to final survey.



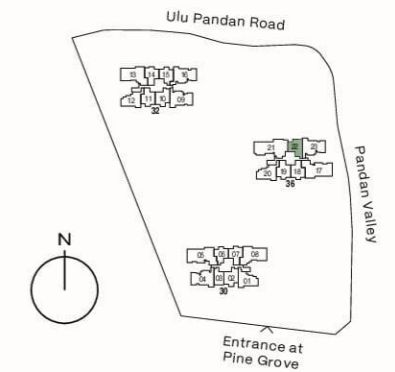
# 2-BEDROOM PREMIUM

TYPE 2BP4

72 sqm (775 sqft)  
#02-22 to #23-22



Areas include AC ledge and balcony, where applicable. All RC ledges are excluded from strata area and non-load bearing. The plans are subjected to change as may be required by relevant authorities. All areas and measurements stated herein as approximate and subject to final survey.



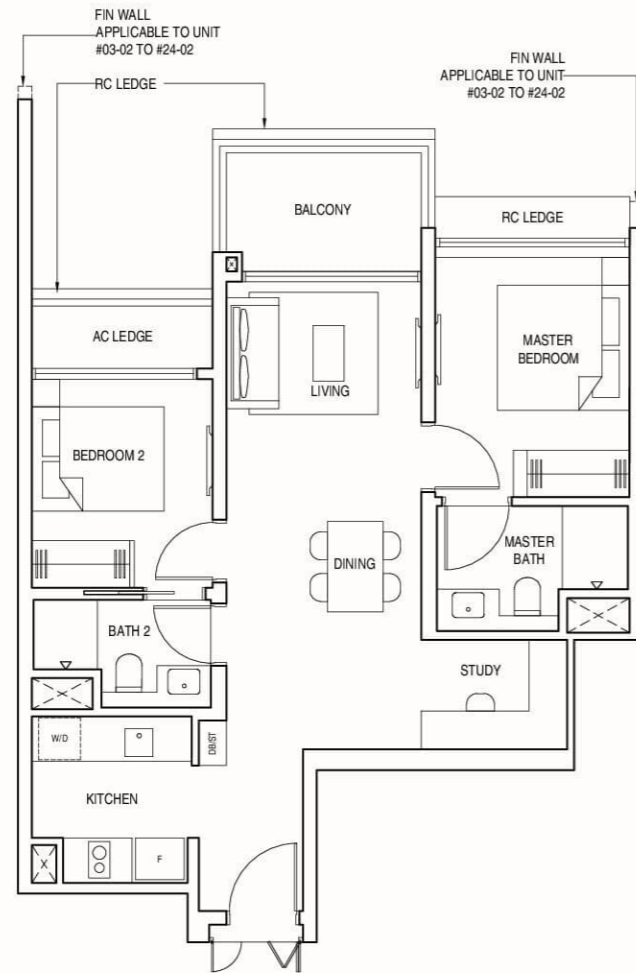


## 2-BEDROOM PREMIUM + STUDY

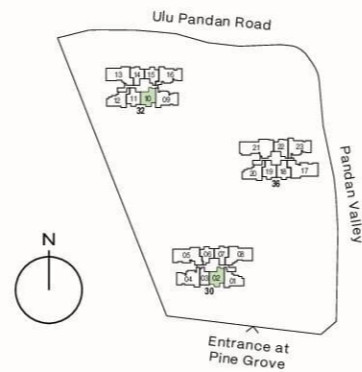
TYPE 2BPS1

74 sqm (797 sqft)

#03-02 to #24-02  
#02-10 to #24-10



Areas include AC ledge and balcony, where applicable. All RC ledges are excluded from strata area and non-load bearing. The plans are subjected to change as may be required by relevant authorities. All areas and measurements stated herein as approximate and subject to final survey.

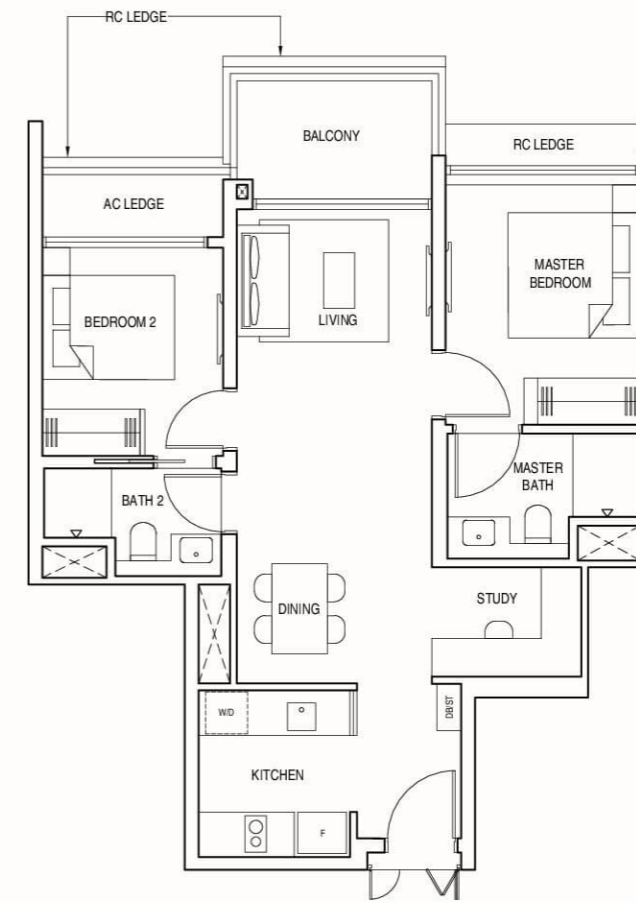


## 2-BEDROOM PREMIUM + STUDY

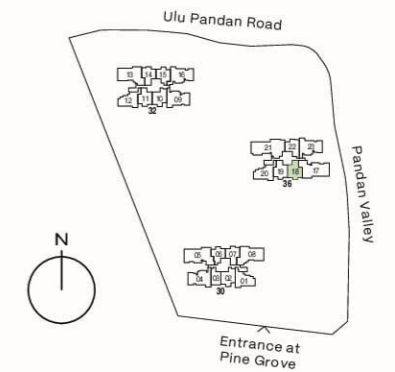
TYPE 2BPS2

74 sqm (797 sqft)

#02-18 to #24-18



Areas include AC ledge and balcony, where applicable. All RC ledges are excluded from strata area and non-load bearing. The plans are subjected to change as may be required by relevant authorities. All areas and measurements stated herein as approximate and subject to final survey.



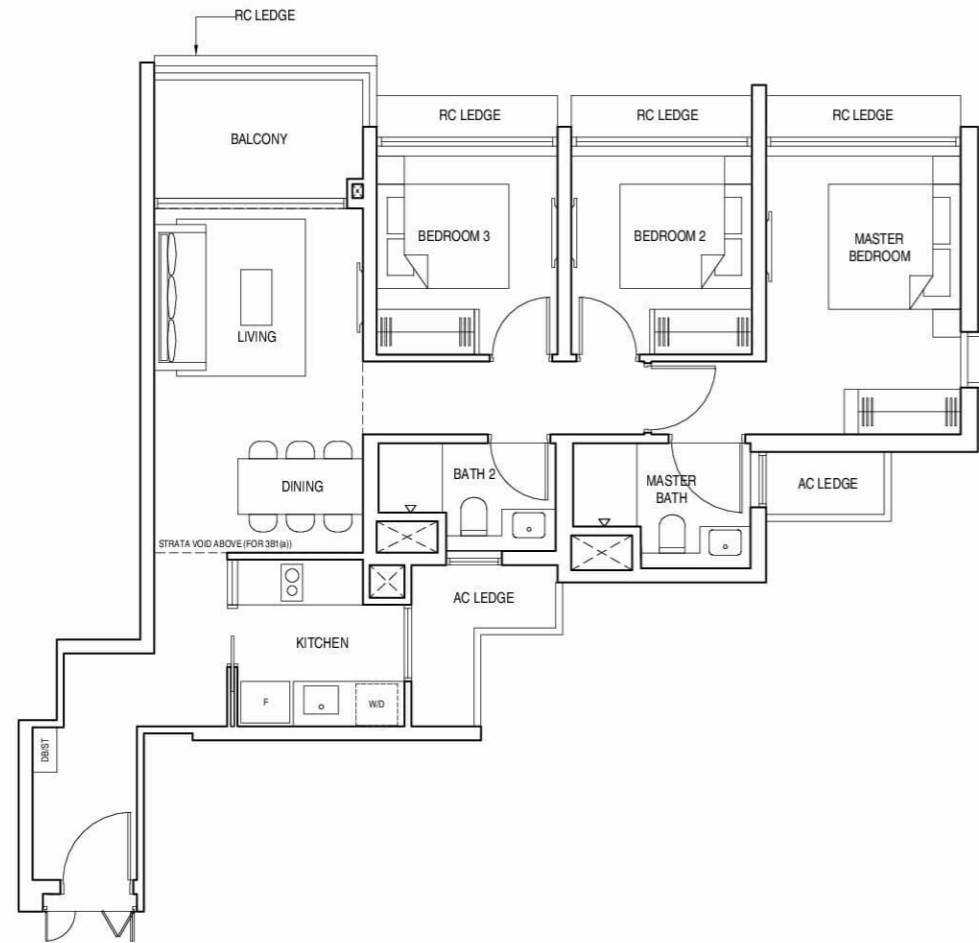
# 3-BEDROOM

TYPE 3B1 & 3B1(a)

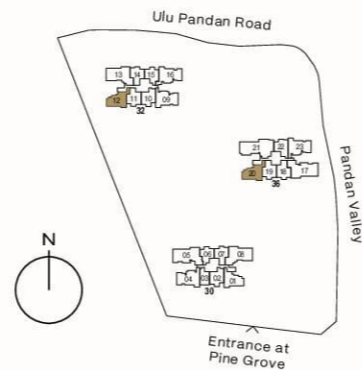
TYPE 3B1  
90 sqm (969 sqft)  
#02-12 to #23-12  
#02-20 to #23-20

TYPE 3B1(a)  
108 sqm (1163 sqft)  
Inclusive of strata void of  
18 sqm (194 sqft) above  
living and dining

#24-12  
#24-20



Areas include AC ledge and balcony, where applicable. All RC ledges are excluded from strata area and non-load bearing. The plans are subjected to change as may be required by relevant authorities. All areas and measurements stated herein as approximate and subject to final survey.



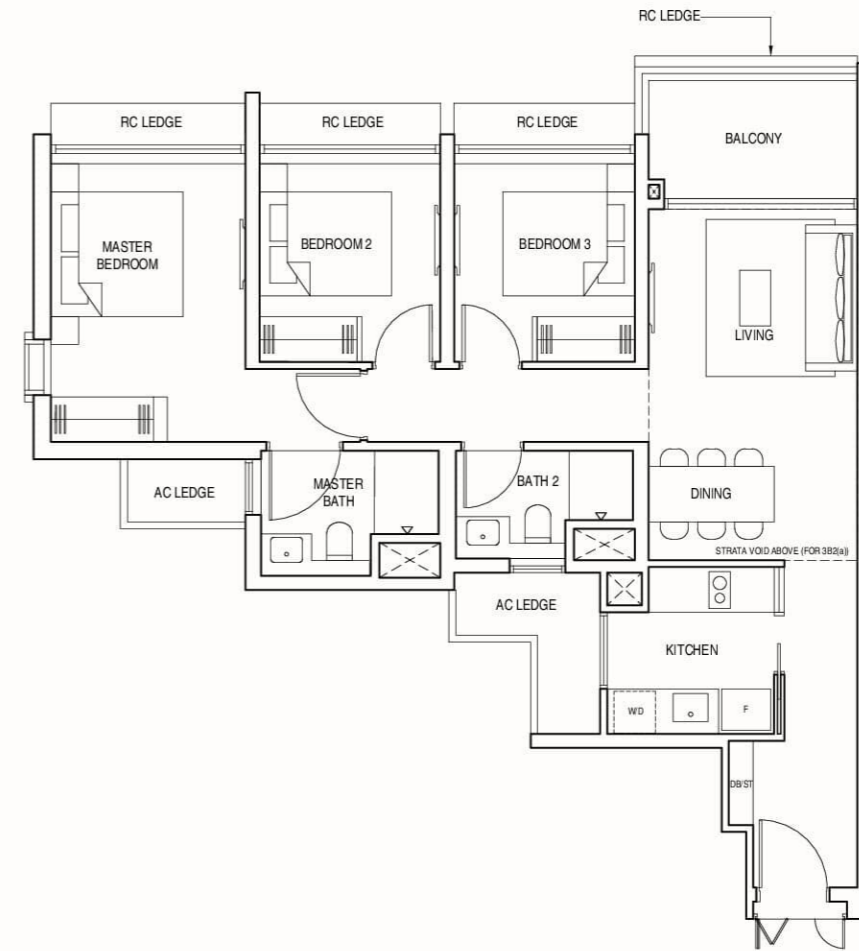
# 3-BEDROOM

TYPE 3B2 & 3B2(a)

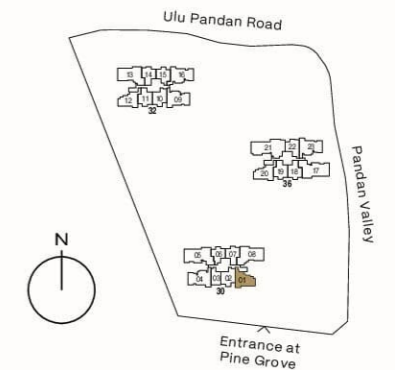
TYPE 3B2  
90 sqm (969 sqft)  
#03-01 to #23-01

TYPE 3B2(a)  
109 sqm (1173 sqft)  
Inclusive of strata void of  
19 sqm (205 sqft) above  
living and dining

#24-01



Areas include AC ledge and balcony, where applicable. All RC ledges are excluded from strata area and non-load bearing. The plans are subjected to change as may be required by relevant authorities. All areas and measurements stated herein as approximate and subject to final survey.



# 3-BEDROOM PREMIUM + STUDY

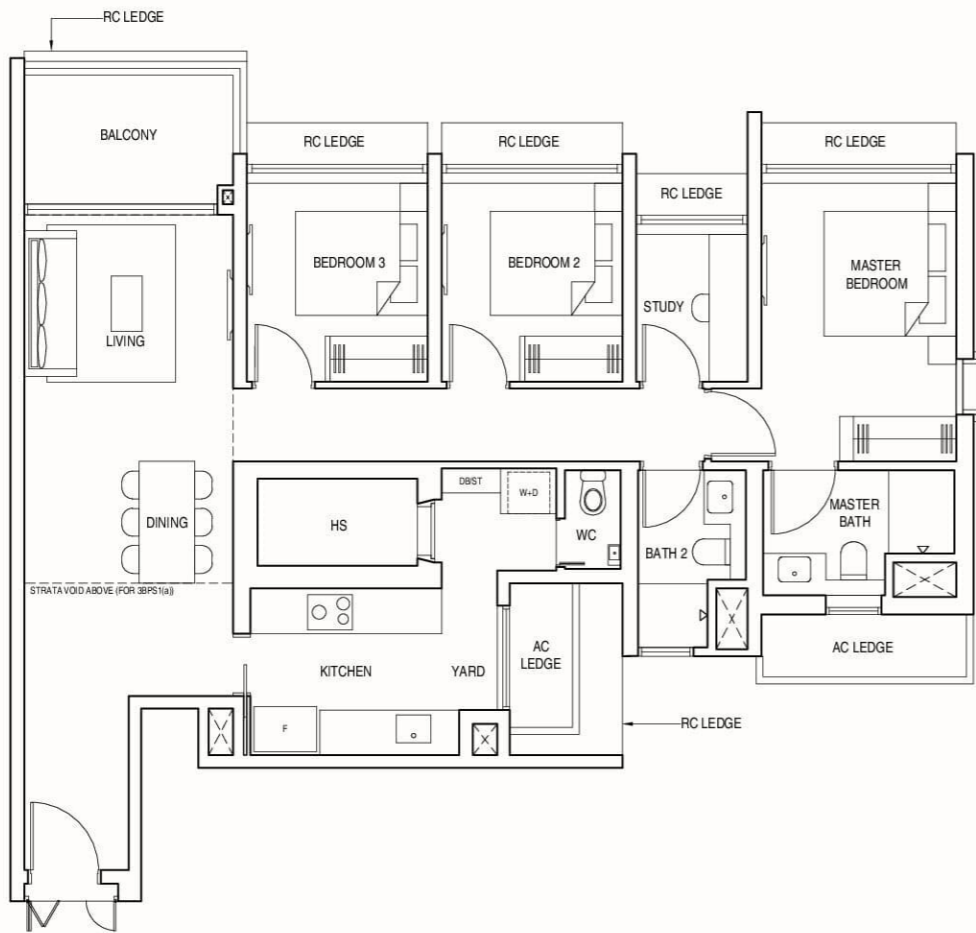
TYPE 3BPS1 & 3BPS1(a)

TYPE 3BPS1  
113 sqm (1216 sqft)

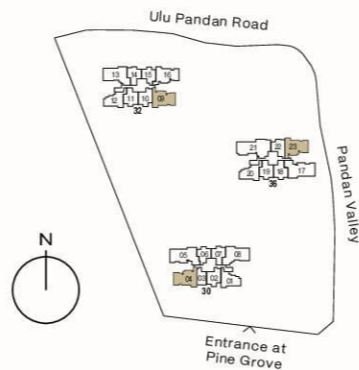
#03-04 to #23-04  
#02-09\* to #23-09\*  
#02-23 to #23-23

TYPE 3BPS1(a)  
132 sqm (1421 sqft)  
Inclusive of strata void of  
19 sqm (205 sqft) above  
living and dining

#24-04  
#24-09\*  
#24-23  
\*Mirrored unit



Areas include AC ledge and balcony, where applicable. All RC ledges are excluded from strata area and non-load bearing. The plans are subjected to change as may be required by relevant authorities. All areas and measurements stated herein as approximate and subject to final survey.



# 3-BEDROOM PREMIUM + STUDY

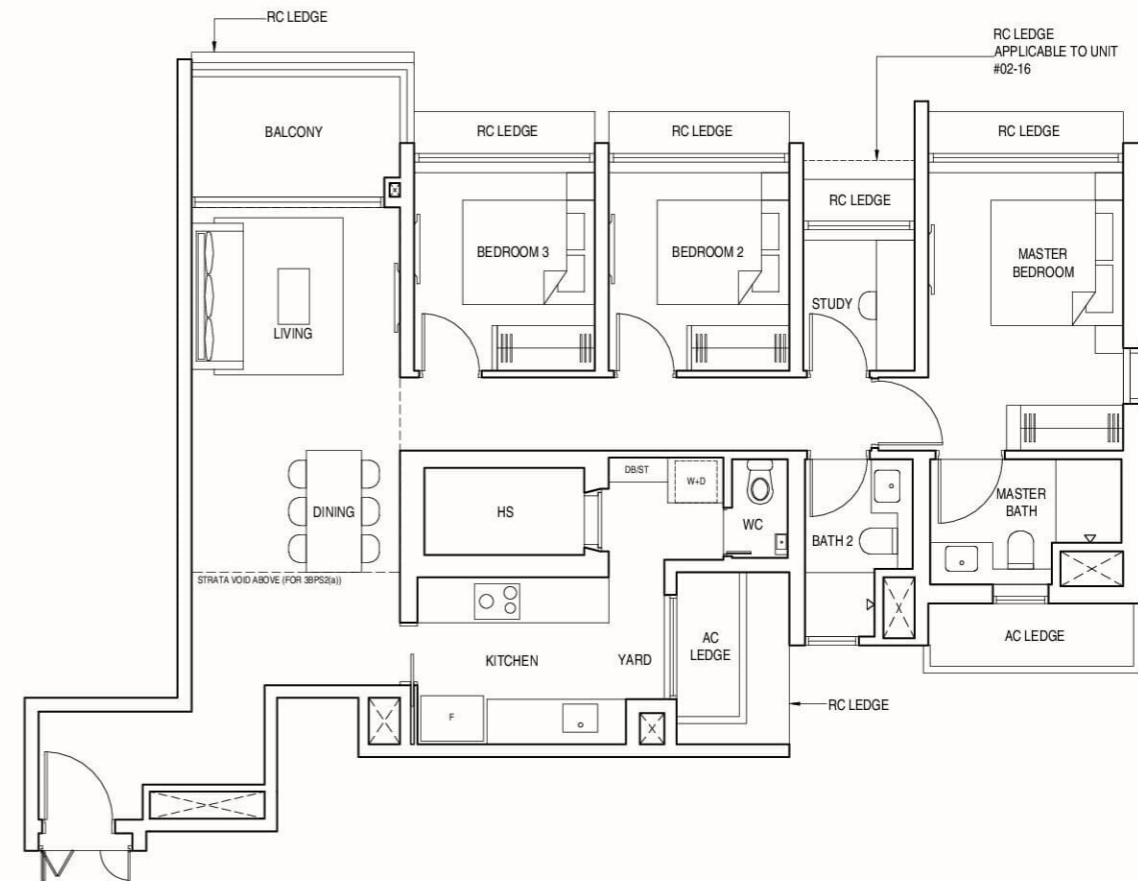
TYPE 3BPS2 & 3BPS2(a)

TYPE 3BPS2  
113 sqm (1216 sqft)

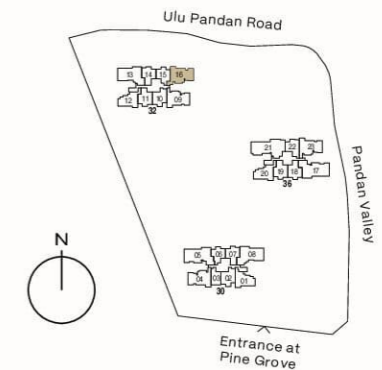
#02-16 to #23-16

TYPE 3BPS2(a)  
132 sqm (1421 sqft)  
Inclusive of strata void of  
19 sqm (205 sqft) above  
living and dining

#24-16



Areas include AC ledge and balcony, where applicable. All RC ledges are excluded from strata area and non-load bearing. The plans are subjected to change as may be required by relevant authorities. All areas and measurements stated herein as approximate and subject to final survey.





# 4-BEDROOM DELUXE (WITH PRIVATE LIFT)

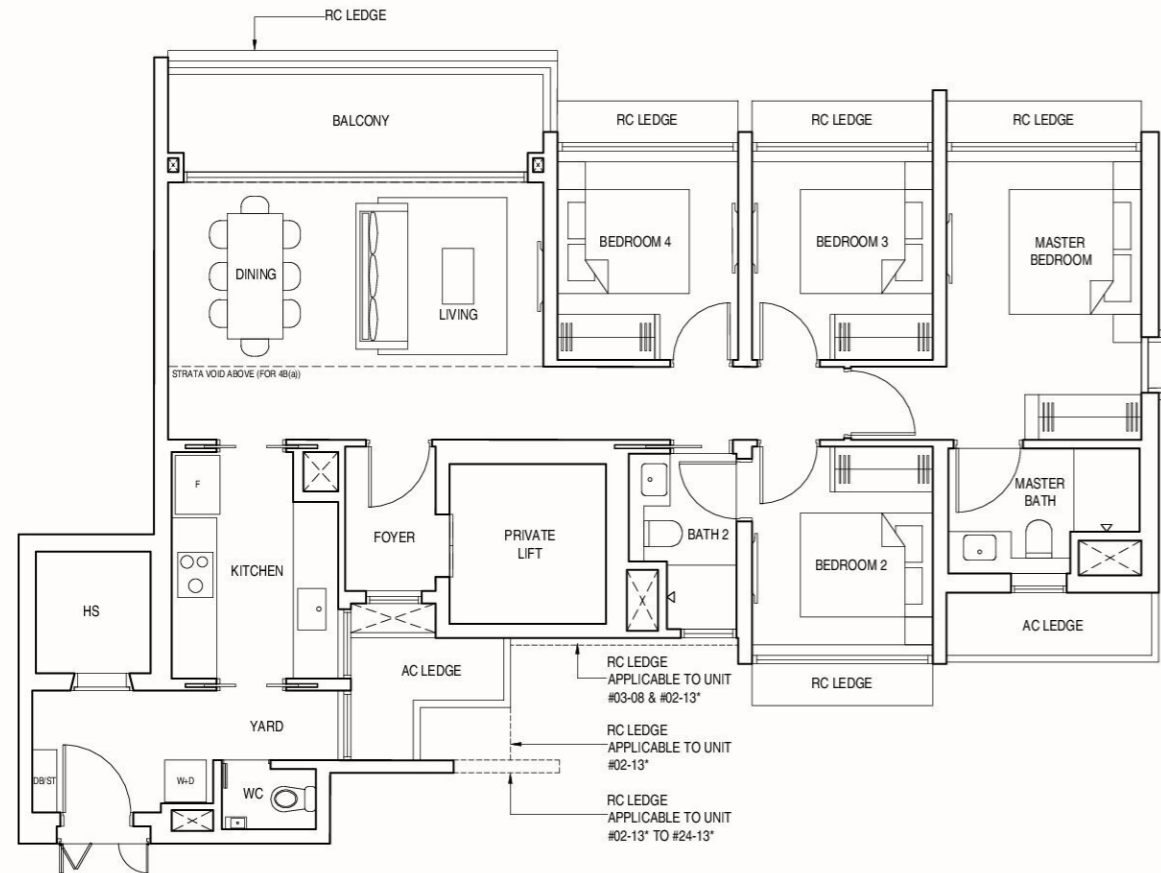
TYPE 4B & 4B(a)

TYPE 4B  
120 sqm (1292 sqft)

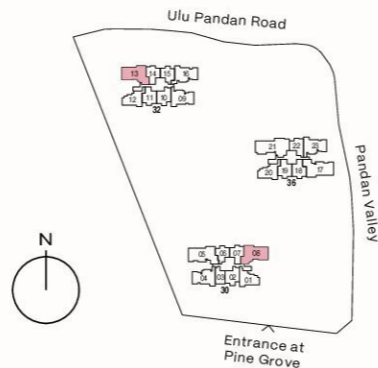
#03-08 to #23-08  
#02-13\* to #23-13\*

TYPE 4B(a)  
138 sqm (1485 sqft)  
Inclusive of strata void of  
18 sqm (194 sqft) above  
living and dining

#24-08  
#24-13\*  
\*Mirrored unit



Areas include AC ledge and balcony, where applicable. All RC ledges are excluded from strata area and non-load bearing. The plans are subjected to change as may be required by relevant authorities. All areas and measurements stated herein as approximate and subject to final survey.



# 4-BEDROOM PREMIUM (WITH PRIVATE LIFT)

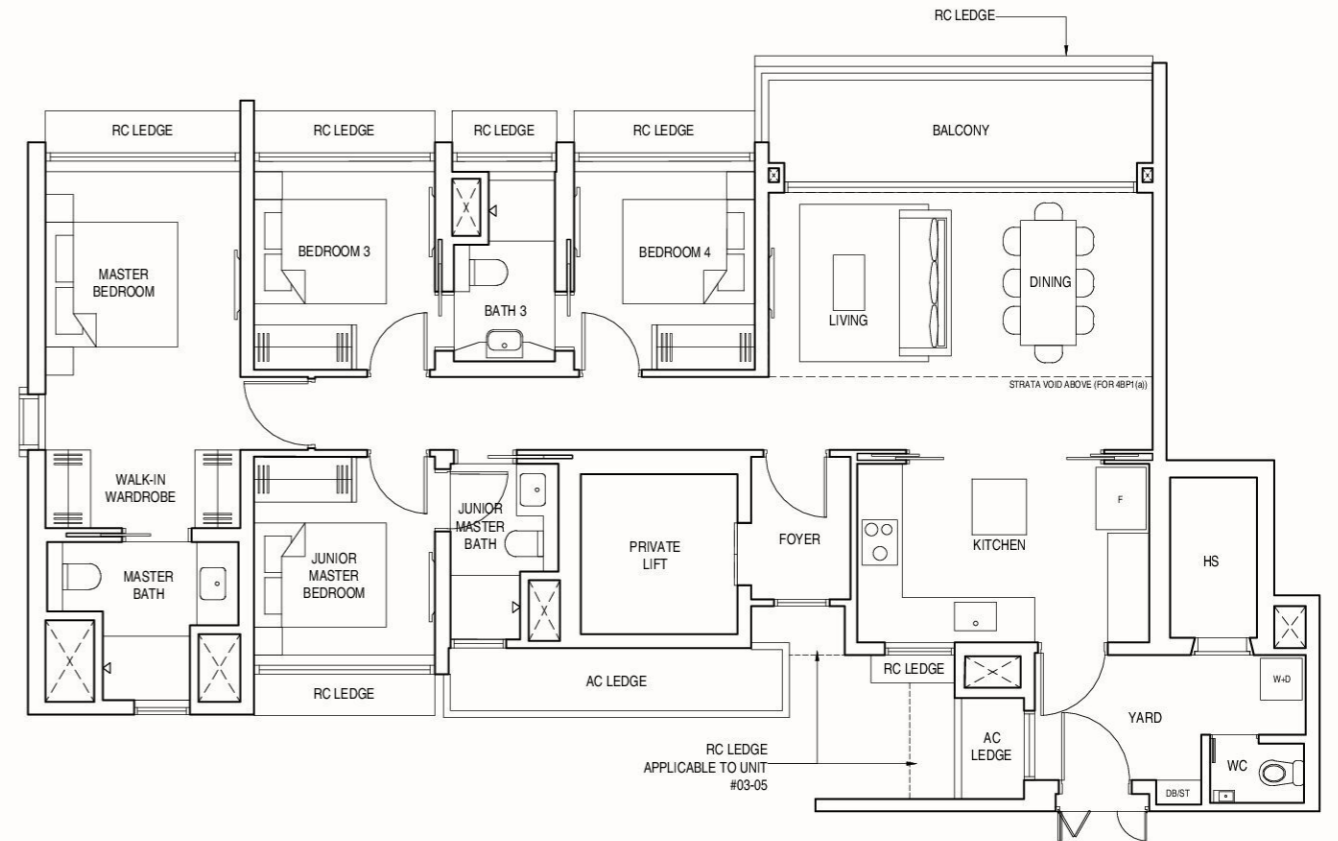
TYPE 4BP1 & 4BP1(a)

TYPE 4BP1  
136 sqm (1464 sqft)

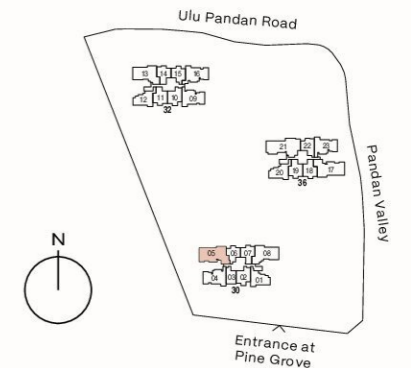
#03-05 to #23-05

TYPE 4BP1(a)  
155 sqm (1668 sqft)  
Inclusive of strata void of  
19 sqm (205 sqft) above  
living and dining

#24-05



Areas include AC ledge and balcony, where applicable. All RC ledges are excluded from strata area and non-load bearing. The plans are subjected to change as may be required by relevant authorities. All areas and measurements stated herein as approximate and subject to final survey.





# 4-BEDROOM PREMIUM (WITH PRIVATE LIFT)

TYPE 4BP2 & 4BP2(a)

TYPE 4BP2  
136 sqm (1464 sqft)

#02-17 to #23-17

TYPE 4BP2(a)  
155 sqm (1668 sqft)  
Inclusive of strata void of  
19 sqm (205 sqft) above  
living and dining

#24-17

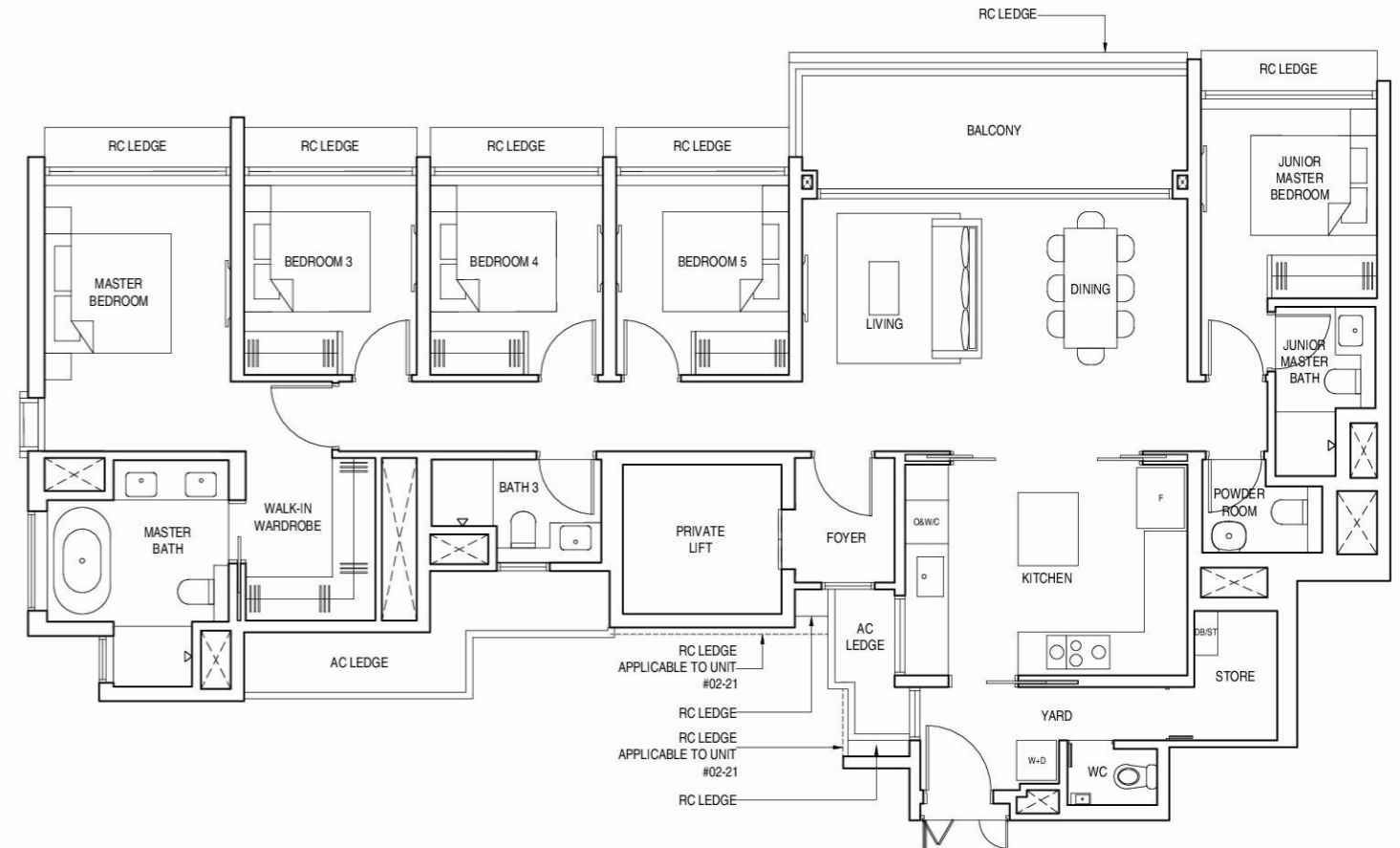
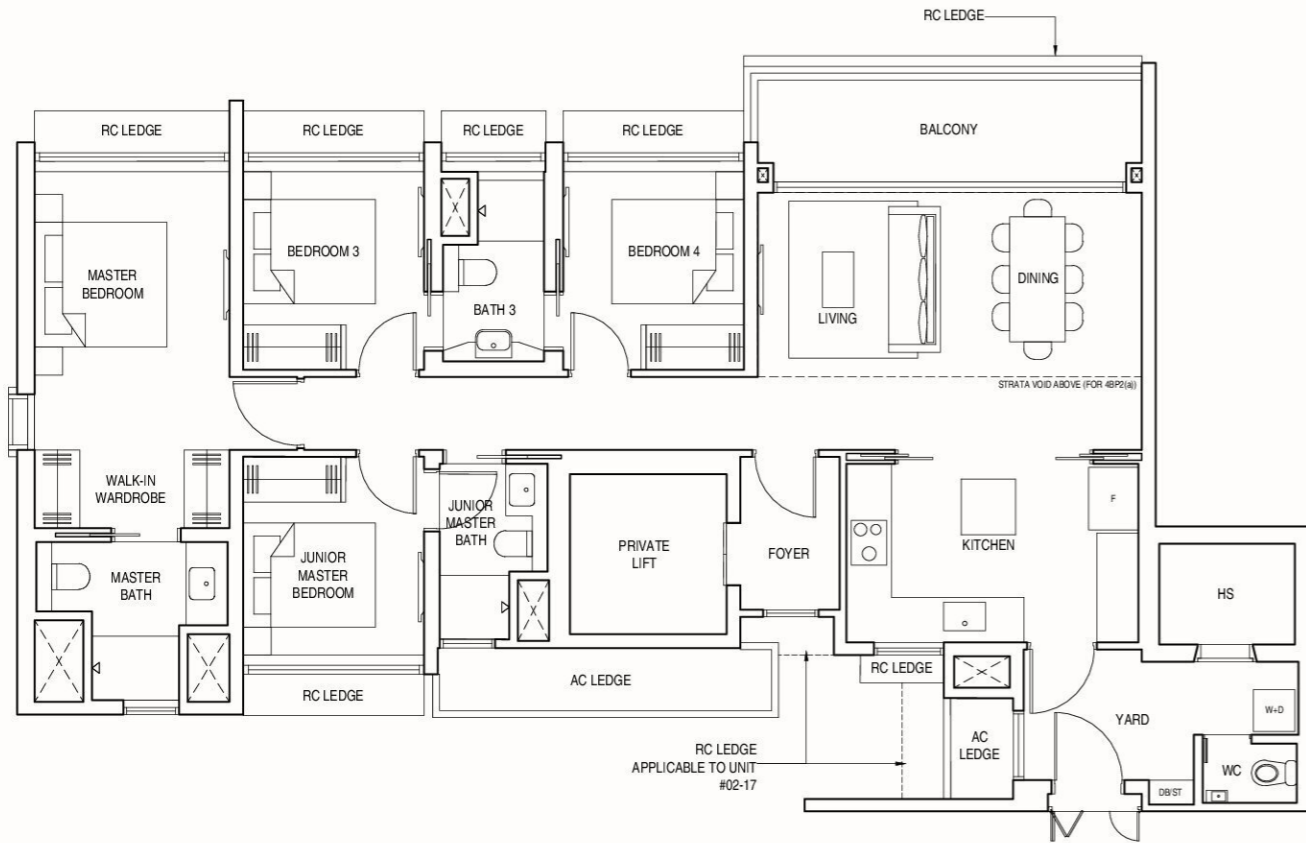


# 5-BEDROOM PREMIUM (WITH PRIVATE LIFT)

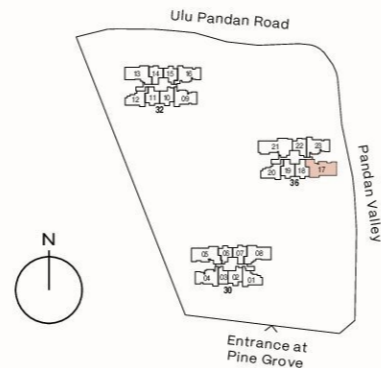
TYPE 5BP

161 sqm (1733 sqft)

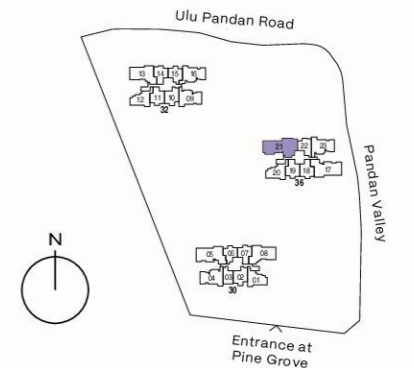
#02-21 to #23-21



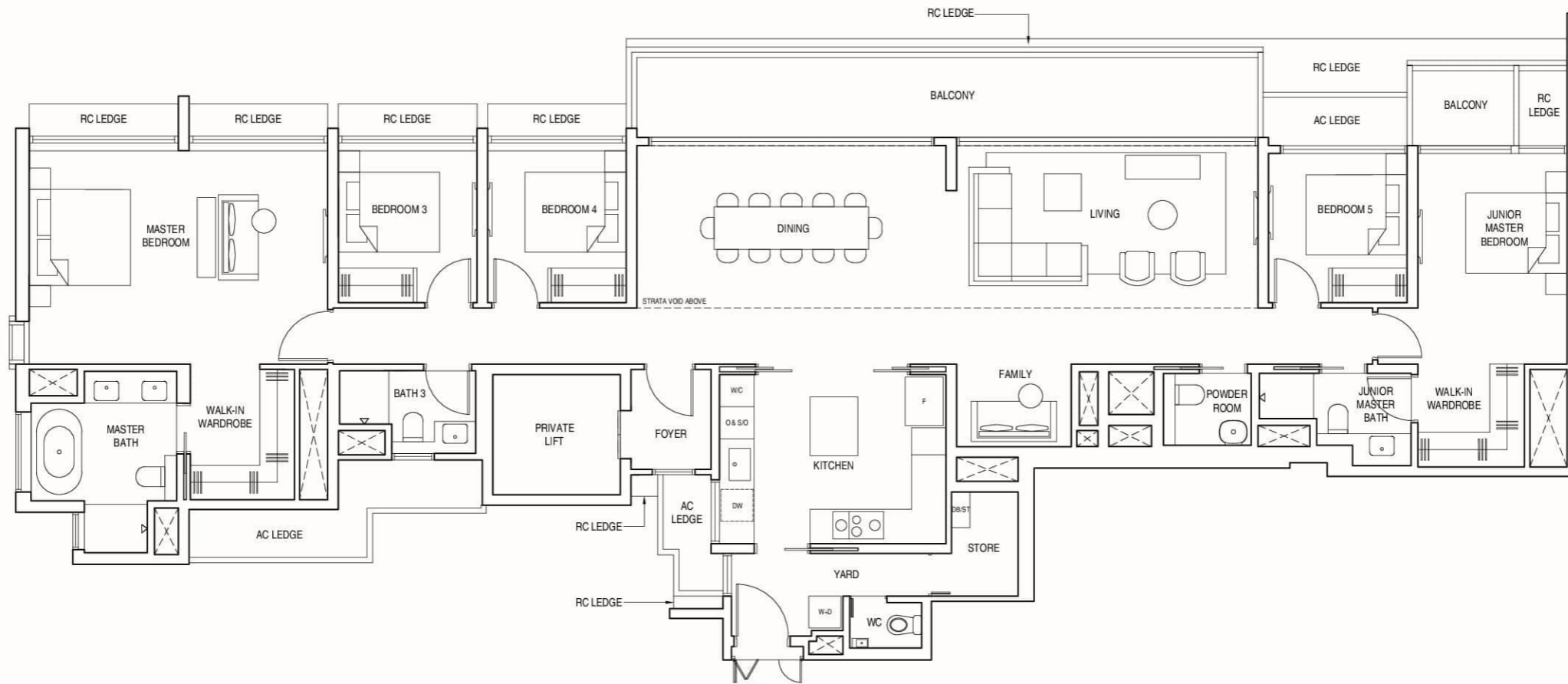
Areas include AC ledge and balcony, where applicable. All RC ledges are excluded from strata area and non-load bearing. The plans are subjected to change as may be required by relevant authorities. All areas and measurements stated herein as approximate and subject to final survey.



Areas include AC ledge and balcony, where applicable. All RC ledges are excluded from strata area and non-load bearing. The plans are subjected to change as may be required by relevant authorities. All areas and measurements stated herein as approximate and subject to final survey.







Areas include AC ledge and balcony, where applicable. All RC ledges are excluded from strata area and non-load bearing. The plans are subjected to change as may be required by relevant authorities. All areas and measurements stated herein as approximate and subject to final survey.

